



### OFF LIMITS AREAS

THESE LOCATIONS ARE OFF LIMITS DURING ALL PRIDE OF THE SOUTH  
TOURNAMENT SERIES EVENTS

# DIRECTORS INFO

- NAME: JEREMY BASS
- PHONE NUMBER: 228-327-5941
- EMAIL: [MJEREMYBASS@YAHOO.COM](mailto:MJEREMYBASS@YAHOO.COM)
- WEBSITE: [WWW.PRIDEOFTHESOUTHBASSANGLERS.COM](http://WWW.PRIDEOFTHESOUTHBASSANGLERS.COM)

EVERY ANGLER IS RESPONSIBLE TO READ AND FOLLOW THE RULES ANY QUESTIONS OR CONCERNS NEEDS TO BE DISCUSSED WITH JEREMY BASS. THE TOURNAMENT DIRECTOR HAS THE FINAL SAY NO EXCEPTIONS

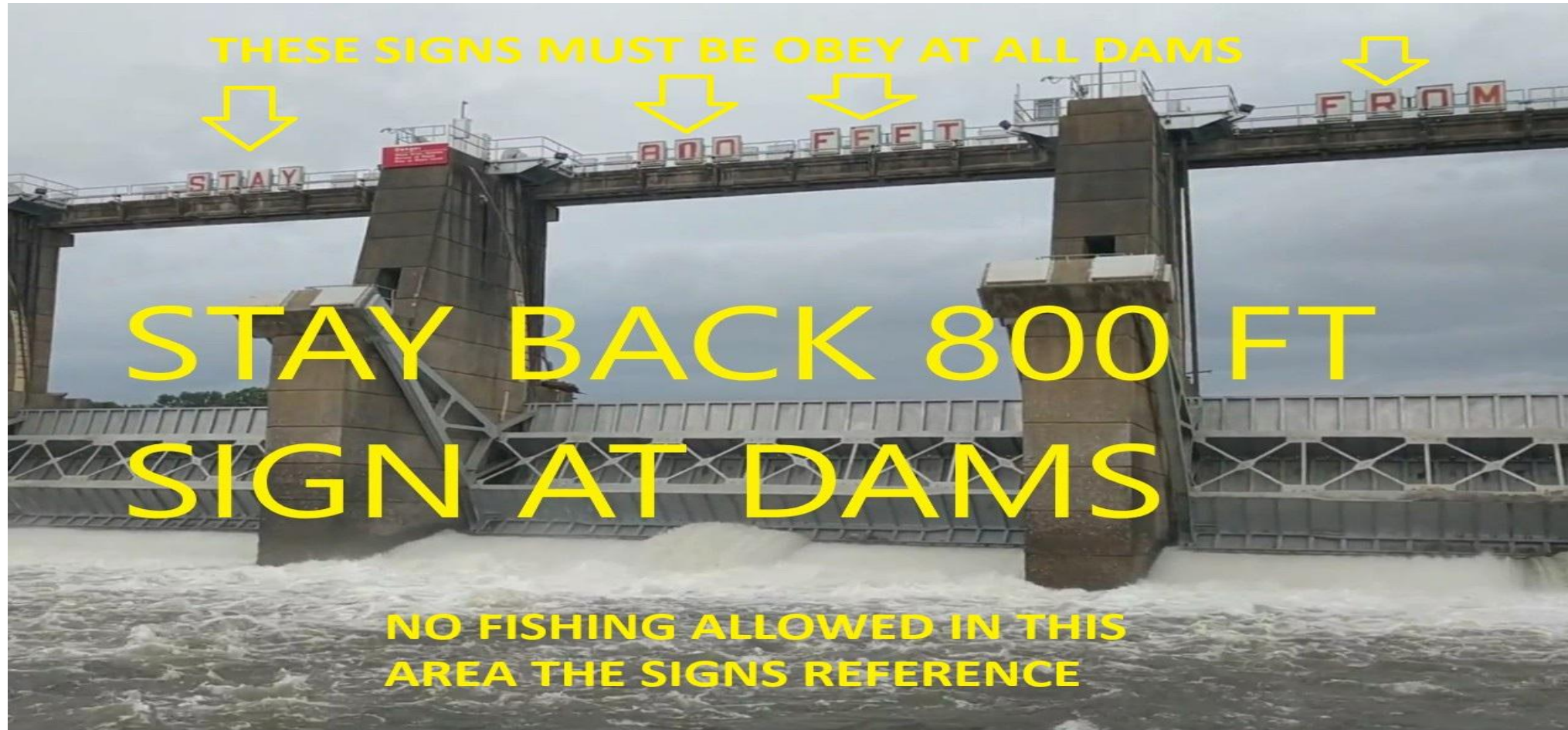
## OFF-LIMIT FISHING AREAS

- MUST OBEY ALL POSTED SIGNS THIS INCLUDES DAMS. TREAT THE SIGN LIKE A WALL DO NOT CROSS NOR CAST PAST THE POSTED SIGN OR THE AREA THE SIGN IS REFERRING TO.
- OFF LIMITS ARE DETERMINED BY STATE LAWS. NO FISHING IN PONDS OR PRIVATE WATERS DURING HIGH WATER LEVELS. NO CASTING INTO A OFF LIMIT AREA EVEN IF YOUR BOAT IS IN LEGAL FISHING WATERS.
- THE DAMS ON THE ALABAMA RIVER FROM CLAIBORNE TO RF HENRY HAVE POSTED SIGNS TO STAY BACK 800FT. THIS MEANS THAT 800 FT BANK TO BANK IS OFF LIMITS TO FISHING. YOU CANNOT CAST OR HAVE YOUR BOAT PAST THAT POINT TREAT IT LIKE A WALL. IF YOU LOCKING THROUGH YOU CAN GO THROUGH LOCK BUT NO FISHING PAST THE CUT OFF LINE.
- THE DAM AT COFFEEVILLE SAME AS ABOVE.
- MILLERS FERRY- THE GRAVEL PIT NORTH OF THE MILLERS FERRY MARINA IS OFF LIMITS.

## OFF-LIMIT FISHING AREA

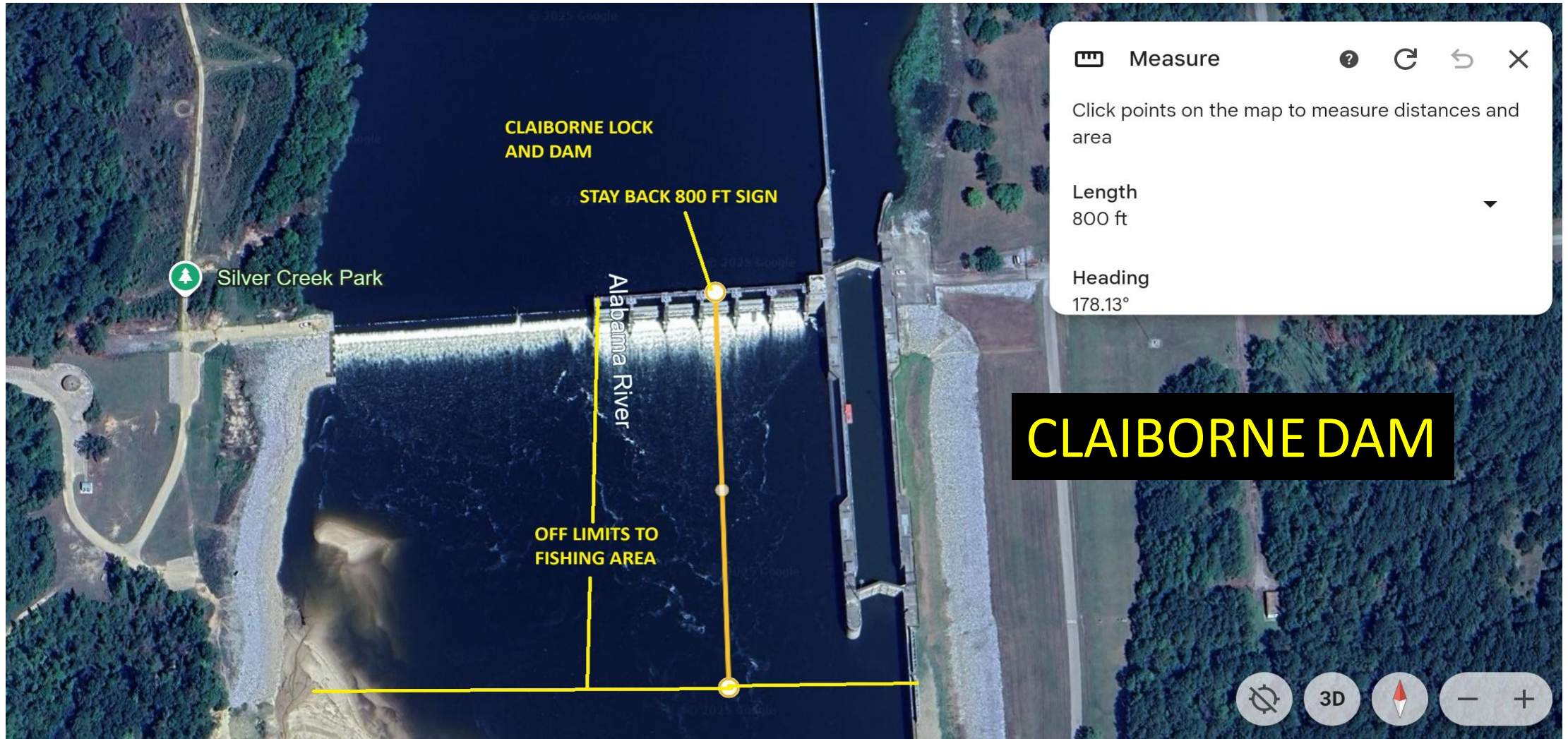
- MOBILE DELTA- THE FOLLOWING AREAS ARE OFF LIMITS. DOCTORS LAKE,HELLCAT LAKE,BOYKIN LAKE,FLAG LAKE,GREEN LAKE,BEAR LAKE,CHOCTAW LAKE, OLIN BASIN,BIG CHIPPEWA,LITTLE CHIPPEWA.

EVERY ANGLER IS RESPONSIBLE TO READ AND FOLLOW THE RULES ANY QUESTIONS OR CONCERNS NEEDS TO BE DISCUSSED WITH JEREMY BASS. THE TOURNAMENT DIRECTOR HAS THE FINAL SAY NO EXCEPTIONS



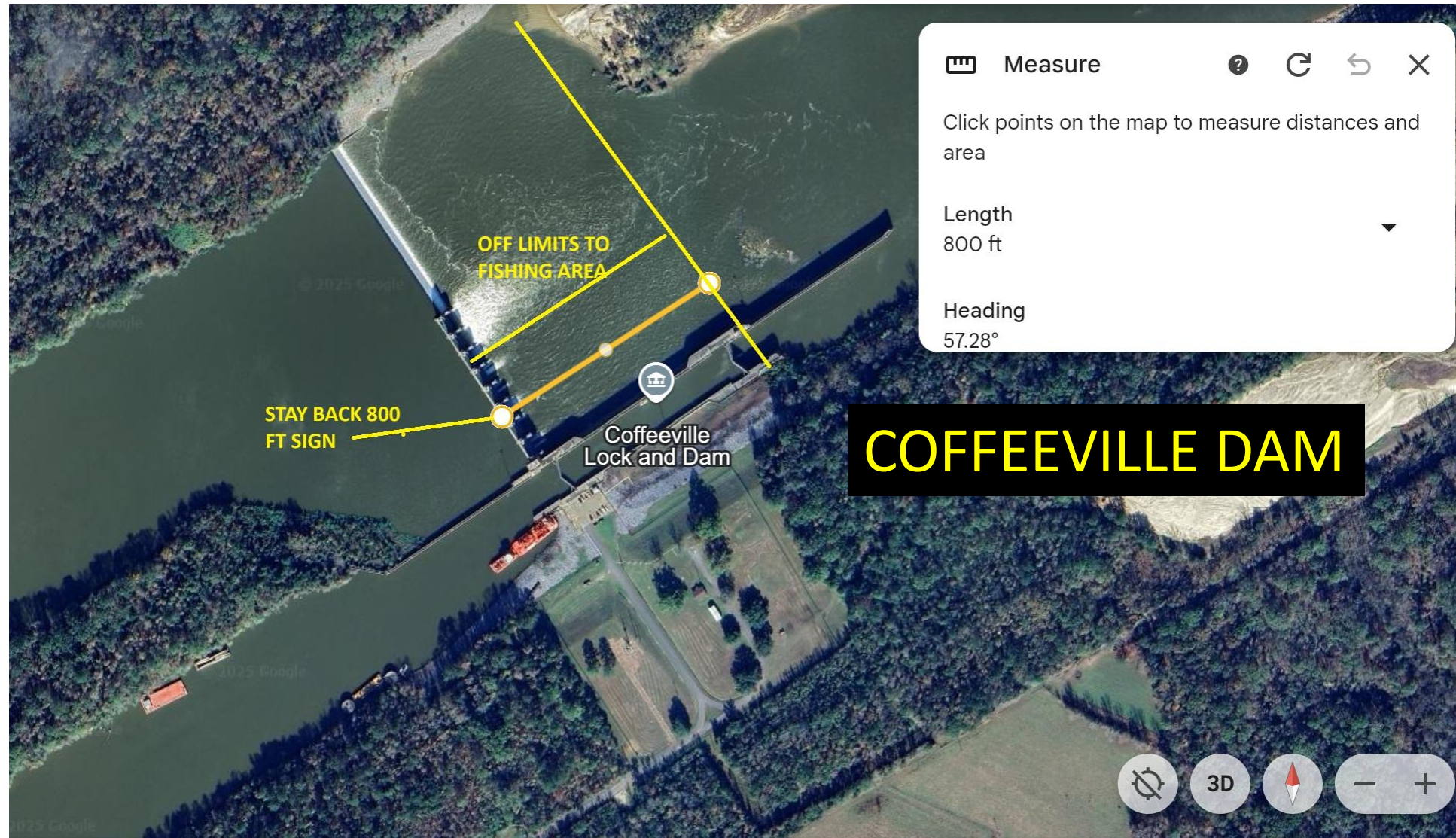


EVERY ANGLER IS RESPONSIBLE TO READ AND FOLLOW THE RULES ANY QUESTIONS OR CONCERNS NEEDS TO BE DISCUSSED WITH JEREMY BASS. THE TOURNAMENT DIRECTOR HAS THE FINAL SAY NO EXCEPTIONS



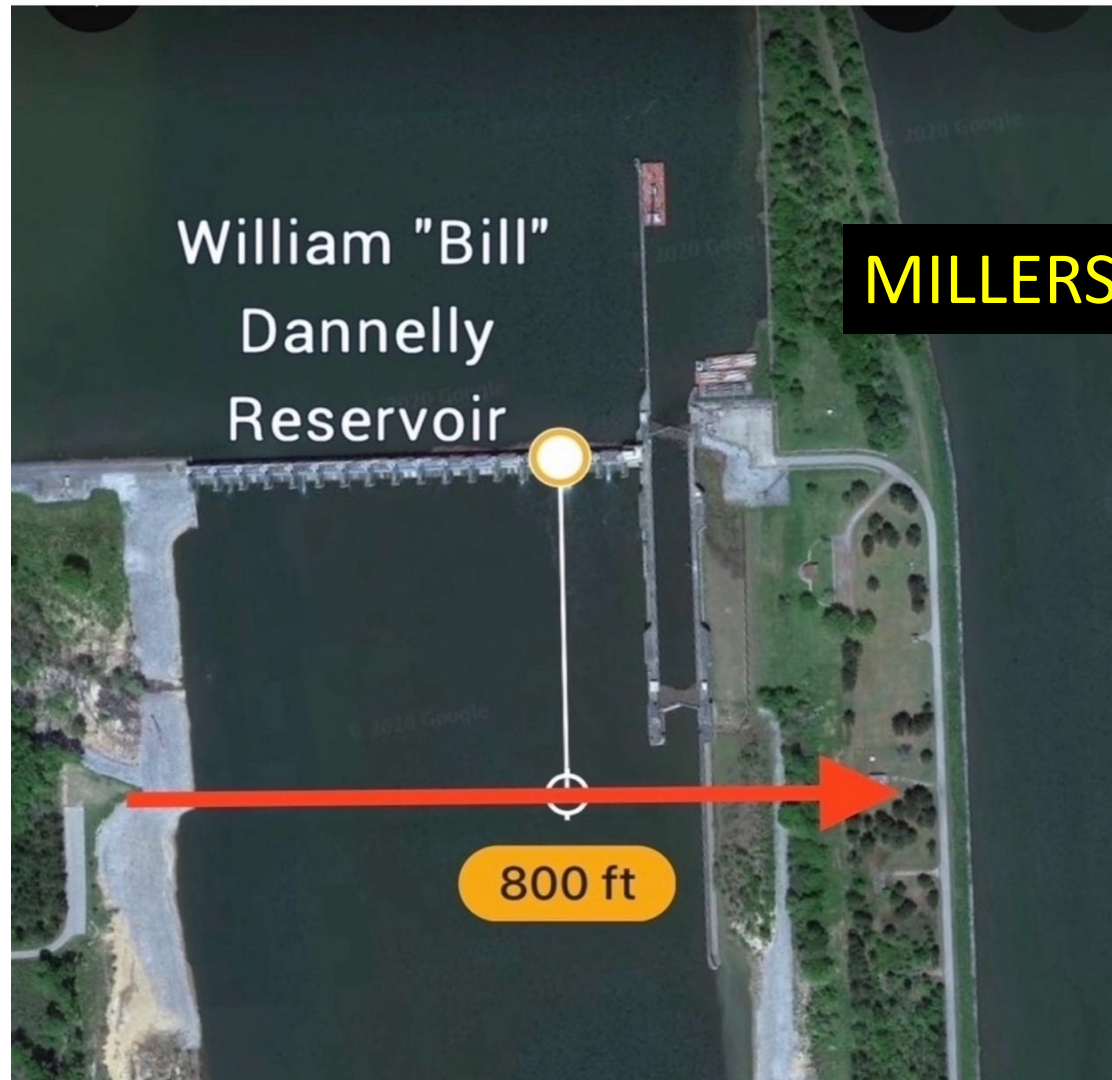


EVERY ANGLER IS RESPONSIBLE TO READ AND FOLLOW THE RULES ANY QUESTIONS OR CONCERNS NEEDS TO BE DISCUSSED WITH JEREMY BASS. THE TOURNAMENT DIRECTOR HAS THE FINAL SAY NO EXCEPTIONS





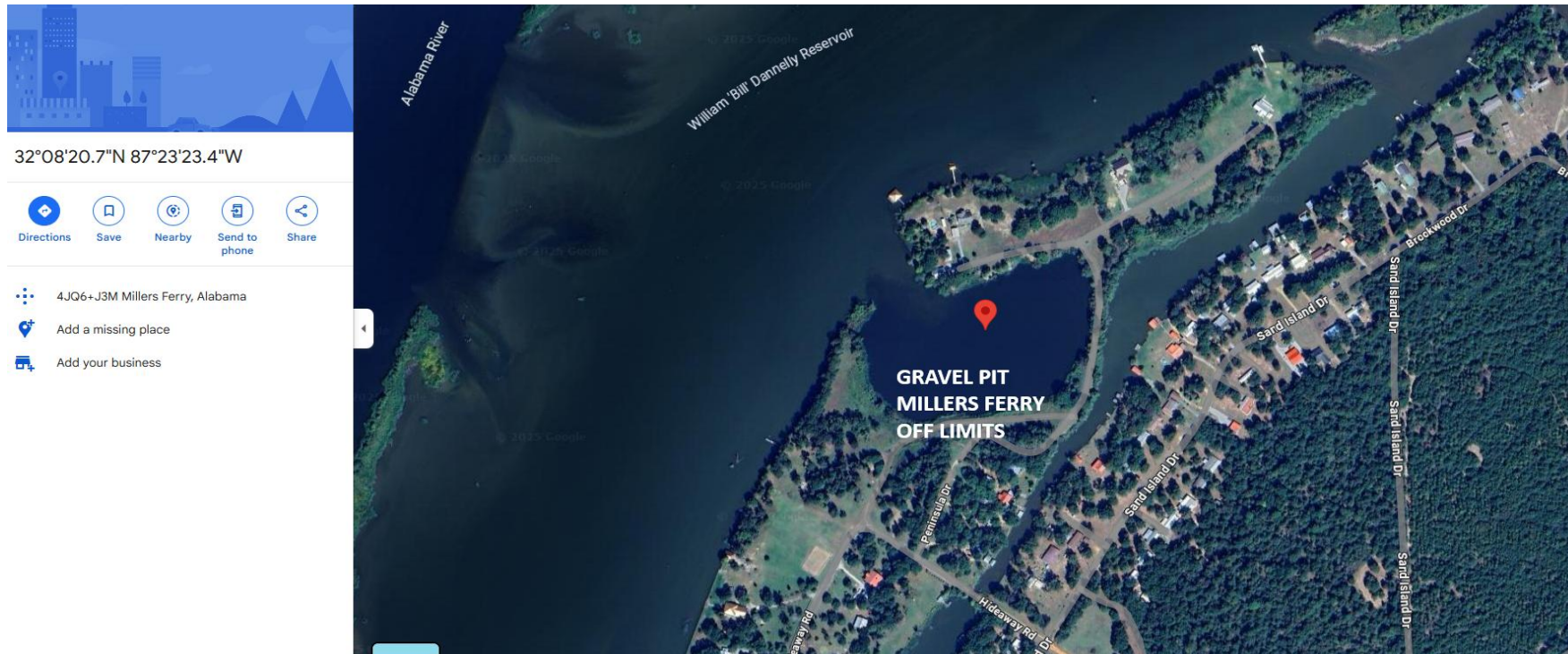
EVERY ANGLER IS RESPONSIBLE TO READ AND FOLLOW THE RULES ANY QUESTIONS OR CONCERNS NEEDS TO BE DISCUSSED WITH JEREMY BASS. THE TOURNAMENT DIRECTOR HAS THE FINAL SAY NO EXCEPTIONS



**MILLERS FERRY DAM**



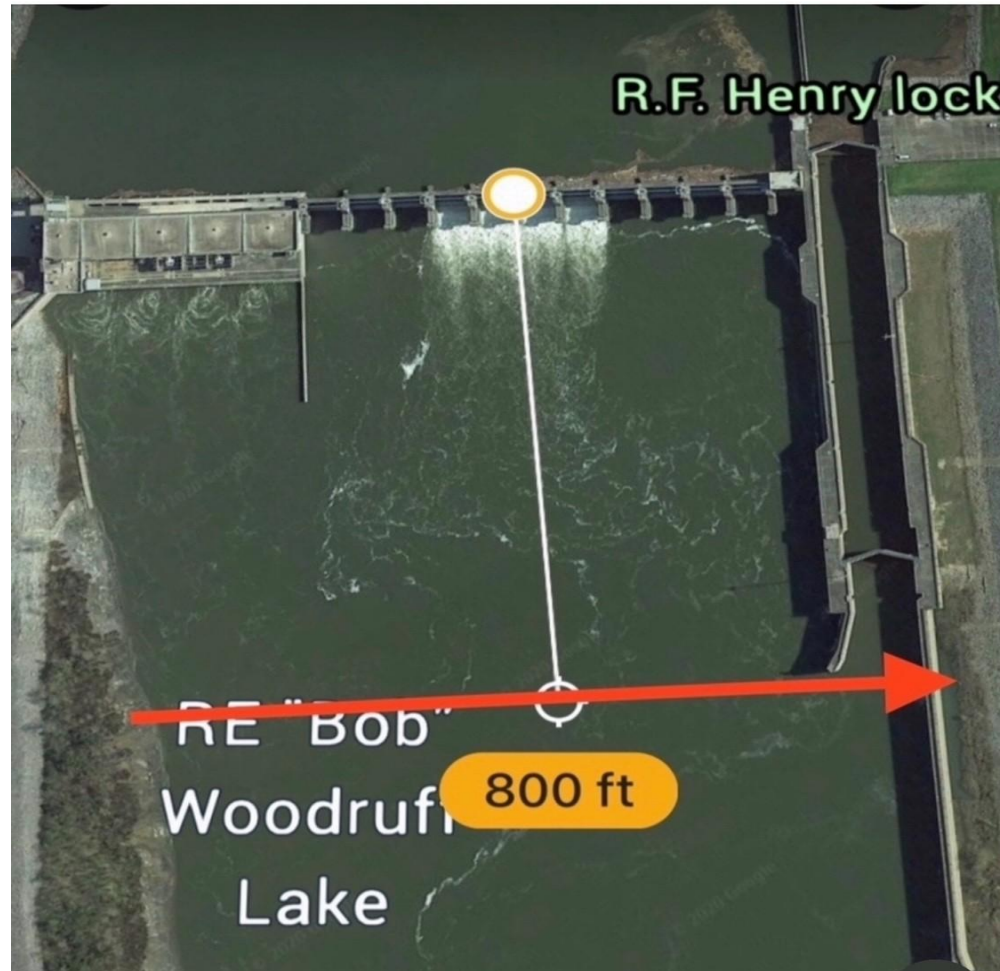
EVERY ANGLER IS RESPONSIBLE TO READ AND FOLLOW THE RULES ANY QUESTIONS OR CONCERNS NEEDS TO BE DISCUSSED WITH JEREMY BASS. THE TOURNAMENT DIRECTOR HAS THE FINAL SAY NO EXCEPTIONS



**GRAVEL PIT AT  
MILLERS FERRY**

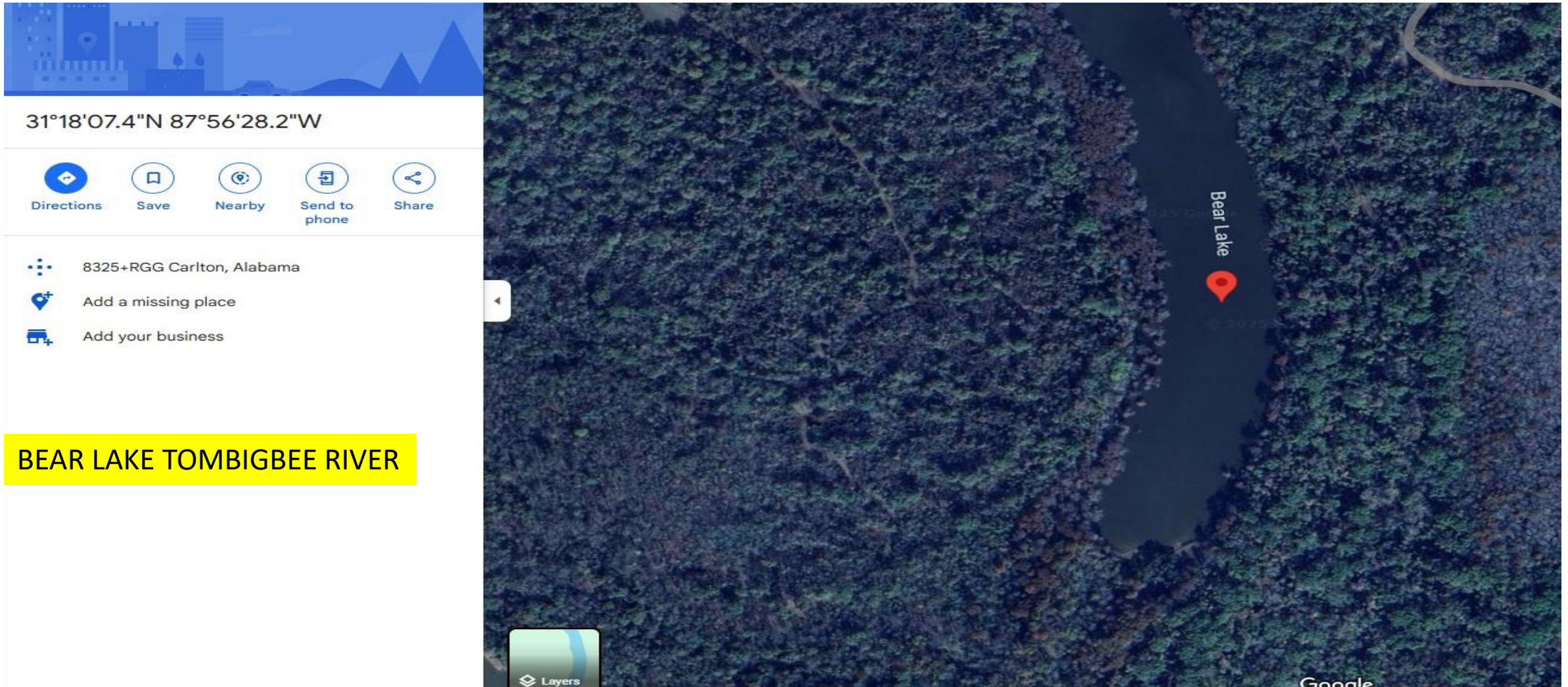


EVERY ANGLER IS RESPONSIBLE TO READ AND FOLLOW THE RULES ANY QUESTIONS OR CONCERNS NEEDS TO BE DISCUSSED WITH JEREMY BASS. THE TOURNAMENT DIRECTOR HAS THE FINAL SAY NO EXCEPTIONS



**RF HENRY IN SELMA  
AT MILLERS FERRY**

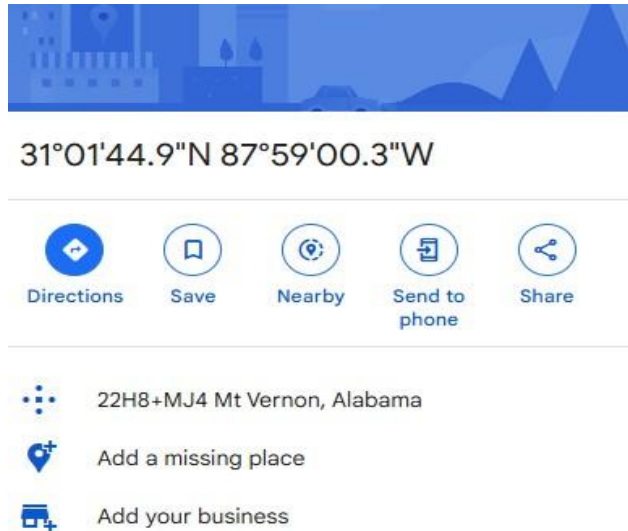
EVERY ANGLER IS RESPONSIBLE TO READ AND FOLLOW THE RULES ANY QUESTIONS OR CONCERNS NEEDS TO BE DISCUSSED WITH JEREMY BASS. THE TOURNAMENT DIRECTOR HAS THE FINAL SAY NO EXCEPTIONS



BEAR LAKE TOMBIGBEE RIVER



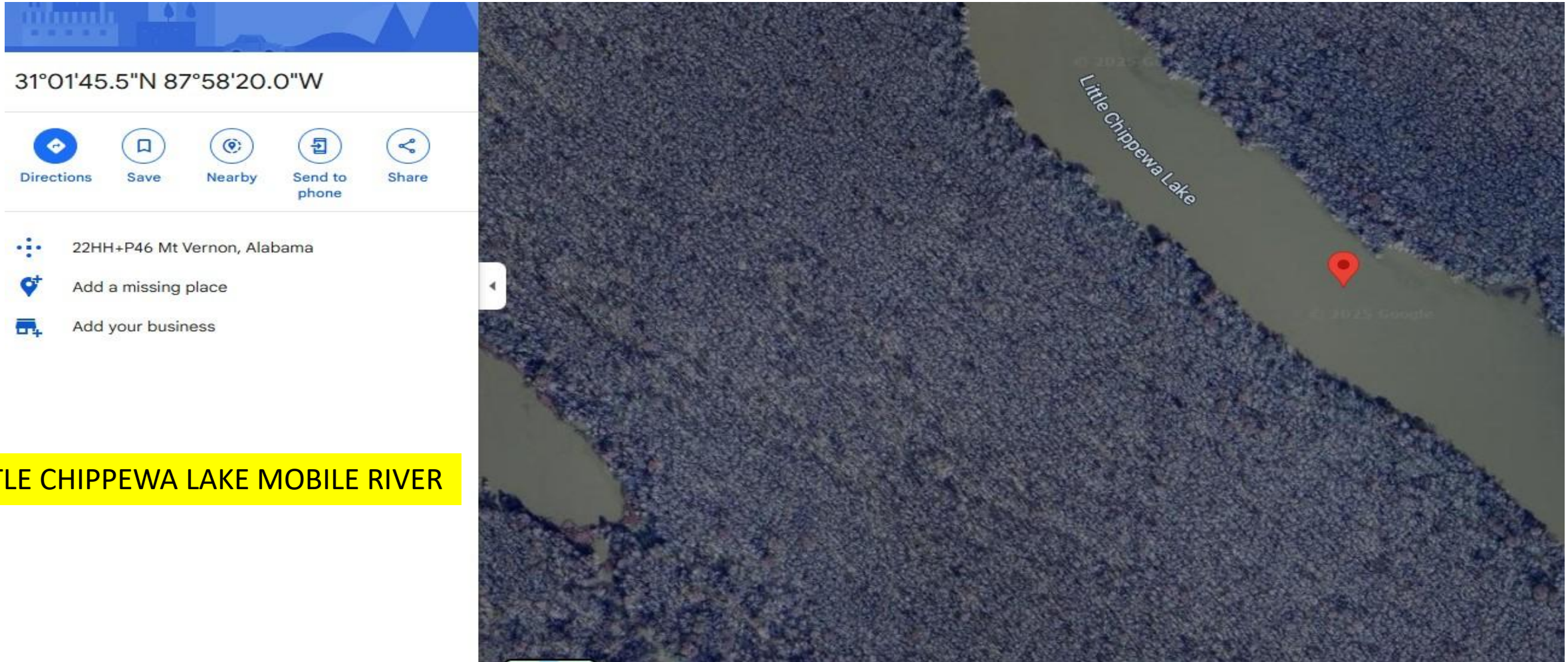
EVERY ANGLER IS RESPONSIBLE TO READ AND FOLLOW THE RULES ANY QUESTIONS OR CONCERNS NEEDS TO BE DISCUSSED WITH JEREMY BASS. THE TOURNAMENT DIRECTOR HAS THE FINAL SAY NO EXCEPTIONS



BIG CHIPPEWA LAKE MOBILE RIVER



EVERY ANGLER IS RESPONSIBLE TO READ AND FOLLOW THE RULES ANY QUESTIONS OR CONCERNS NEEDS TO BE DISCUSSED WITH JEREMY BASS. THE TOURNAMENT DIRECTOR HAS THE FINAL SAY NO EXCEPTIONS



LITTLE CHIPPEWA LAKE MOBILE RIVER



EVERY ANGLER IS RESPONSIBLE TO READ AND FOLLOW THE RULES ANY QUESTIONS OR CONCERNS NEEDS TO BE DISCUSSED WITH JEREMY BASS. THE TOURNAMENT DIRECTOR HAS THE FINAL SAY NO EXCEPTIONS



DOCTOR Lake Alabama river cutoff



EVERY ANGLER IS RESPONSIBLE TO READ AND FOLLOW THE RULES ANY QUESTIONS OR CONCERNS NEEDS TO BE DISCUSSED WITH JEREMY BASS. THE TOURNAMENT DIRECTOR HAS THE FINAL SAY NO EXCEPTIONS





EVERY ANGLER IS RESPONSIBLE TO READ AND FOLLOW THE RULES ANY QUESTIONS OR CONCERNS NEEDS TO BE DISCUSSED WITH JEREMY BASS. THE TOURNAMENT DIRECTOR HAS THE FINAL SAY NO EXCEPTIONS

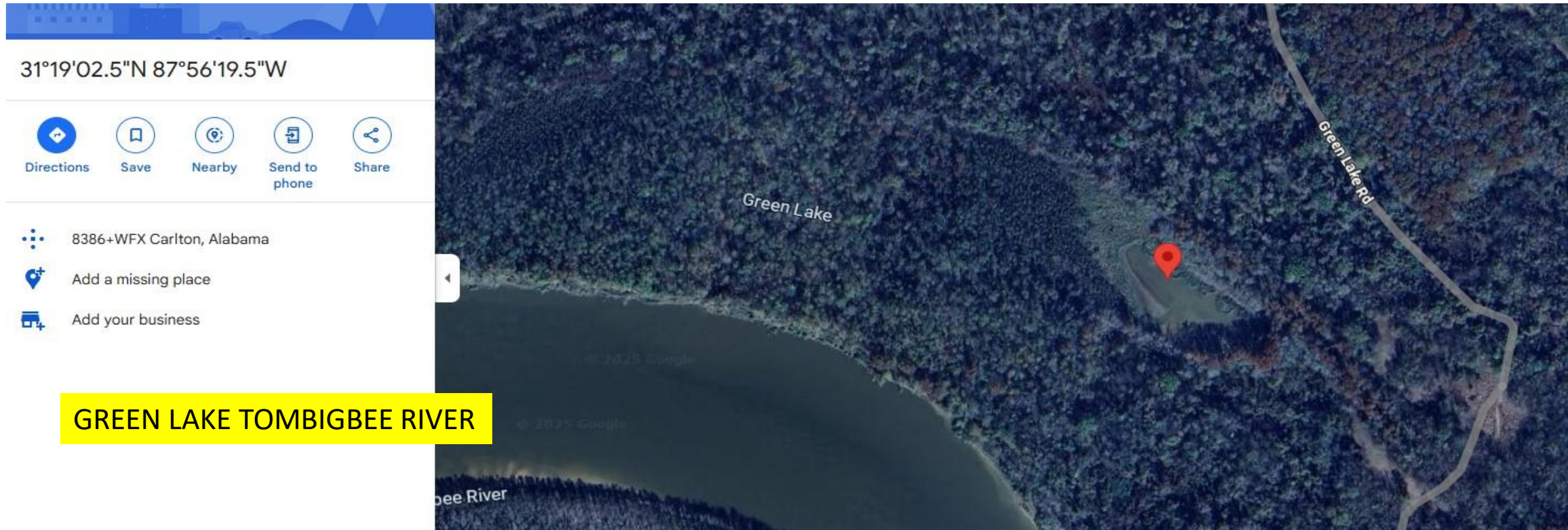


EVERY ANGLER IS RESPONSIBLE TO READ AND FOLLOW THE RULES ANY QUESTIONS OR CONCERNS NEEDS TO BE DISCUSSED WITH JEREMY BASS. THE TOURNAMENT DIRECTOR HAS THE FINAL SAY NO EXCEPTIONS





EVERY ANGLER IS RESPONSIBLE TO READ AND FOLLOW THE RULES ANY QUESTIONS OR CONCERNS NEEDS TO BE DISCUSSED WITH JEREMY BASS. THE TOURNAMENT DIRECTOR HAS THE FINAL SAY NO EXCEPTIONS





EVERY ANGLER IS RESPONSIBLE TO READ AND FOLLOW THE RULES ANY QUESTIONS OR CONCERNS NEEDS TO BE DISCUSSED WITH JEREMY BASS. THE TOURNAMENT DIRECTOR HAS THE FINAL SAY NO EXCEPTIONS

